

this parcel. Acquisition of this parcel by the Township could provide more frontage along High Hill Road to be used for trails, active recreation fields, access drives, or parking.

46. Privately Owned Parcel, Swedesboro (Block 1, Lot 1)

Block 1, Lot 1 in Swedesboro is approximately 0.9 acres and is directly across Locke Avenue from the former Japanese Internment Camp site (Block 5, Lot 16) in Woolwich. The site has access to Raccoon Creek, is directly adjacent to the Locke Avenue bridge, and contains a vacant and dilapidated residence. The property should be considered for acquisition as its location provides an excellent opportunity for a park that could serve as a gateway to downtown Swedesboro and Locke Avenue park in Woolwich.



Photo: Matthew Blake

EXISTING FACILITY INVENTORY										
FACILITY TYPE	PARKS			SCHOOLS						GRAND TOTAL
	LOCKE AVE/HIGH HILL	LAKE NARRATICON PARK	PARKS TOTAL	KINGSWAY REGIONAL	WALTER HILL	CHARLES STRATTON	CHARLES HARKER	MARGARET CLIFFORD	SCHOOLS TOTAL	
BASEBALL	7	0	7	2		1	1		4	11
BASKETBALL (OUTDOOR)	2	0	2		2	1	1	0	4	6
BASKETBALL (INDOOR)	0	0	0	1	1	1	1	1	5	5
FOOTBALL	2	0	2	1					1	3
FIELD HOCKEY	0	0	0	2					2	2
MULTIPURPOSE FIELD	1	0	1	1					1	2
PLAYGROUND	1	1	2		1	1	1	1	4	6
SOCCER	4	0	4	4					4	8
TRACK	0	0	0	1					1	1
SOFTBALL	2	0	2	2		1	1		4	6
TENNIS	0	0	0	6					6	6

COMPARABLE MUNICIPALITIES SUMMARY CHART												
	WOOLWICH/SWEDESBORO	RADNOR, PA	UPPER DUBLIN, PA	UPPER MORELAND, PA	RANDOLPH, NJ	ROXBURY, NJ	SCOTCH PLAINS, NJ	AVERAGE	DIFFERENCE FROM AVERAGE	DIFFERENCE FROM MAXIMUM	GROUP DESIRED FACILITIES	ESTIMATED LOS CALC
POPULATION	26,069 (expected 2040)	30,878	25,569	24,015	25,734	23,324	23,510					
# OF PARKS	2	27	28	19	28	28	26.33		-24	-26		
PARK AREA (ACRES)	115.17	346.59	390.6	218.15	935.36	353.1	92.5	389.38	-274.21	-820.19		
FACILITY												
BASEBALL	5	6	23	2	3	8	7	8.17	-3	-18	4	2-3
BASKETBALL	2	6	16	13	4	5	7	8.50	-7	-14		
FIELD HOCKEY	0	0	0	0	0	0	0	0.00	0	0	2	
FOOTBALL	2	1	2	1	2	0	0	1.00	1	0	2-3*	6**
LACROSSE	0	0	0	0	1	0	0	0.17	0	-1		
MULTIPURPOSE FIELD	1	9	16	7	5	2	0	6.50	-6	-15		**
PLAYGROUND	3	9	16	18	4	6	8	10.17	-7	-15		
SKATEPARK	0	1	0	0	1	0	0	0.33	0	-1		
SOCCER	4	3	18	3	7	7	10	8.00	-4	-14	4	6
SOFTBALL	4	6	8	6	11	9	6	7.67	-4	-7	4	2-3
ROLLER HOCKEY	0	1	1	1	0	1	1	0.83	-1	-1		
TENNIS	0	5	20	9	6	5	11	9.33	-9	-20		
VOLLEYBALL	0	1	3	5	1	2	0	2.00	-2	-5		

* Organization did not respond with a specific number of desired fields
 ** Survey sample indicated high demand for football. Consider multiuse fields for this sport.

All of the sites mentioned above can also be located on the Park and Open Space Inventory Map found at the end of this chapter.

Parks and Open Space Analysis Mapping

After analysis of the Township inventory mapping and discussions with the project committee, several sites were chosen to be more closely analyzed for potential recreational uses. These sites were chosen based upon

several factors including size, location, ownership, existing on site uses, adjacent uses, existing natural features on site, and their general capability to accommodate various recreational uses desired by the Township and borough. All site analysis maps are located at the end of this chapter.

Recreational Facilities Analysis

Multiple tools were used to analyze current active recreation facility use and demand to make determinations and recommendations for future active recreation

facilities. These tools include an facility inventory, a sports groups questionnaire, community benchmarking, level of service calculations, telephone survey results, online survey results, and first hand knowledge and opinions from the project committee and the Woolwich Township Parks Director.

Recreation Facilities and Programs Inventory

The existing facility inventory chart below identifies existing municipal owned recreation facilities within the Township and borough. The chart also identifies facilities located at area schools including Kingsway Regional, Walter Hill School, Charles Stratton School, Charles Harker School, and Margaret Clifford School. Existing facilities examined include baseball fields, softball fields, soccer fields, football fields, field hockey fields, multi purpose fields, running tracks, tennis courts, basketball courts, and playgrounds. The 11 baseball fields in the Township is the most of any facility. Soccer is second with 8 fields followed by basketball, tennis, softball and playgrounds each with 6.

The Swedesboro / Woolwich Parks and Recreation Department has a rapidly growing list of community recreational organizations. The chart located at the end of this chapter identifies these organizations. As part of the planning process, each of these organizations were contacted and to provide information regarding their organizational participation, facility use, facility need, and organizational structure.

Of the 11 organizations, the largest program is currently the Swedesboro Woolwich Soccer Association which has approximately 3,000 participants per year. Youth baseball and softball is the second most popular sport with 5 organizations totaling approximately 2,200 participants. Swedesboro Woolwich Basketball currently has approxi-

mately 450 participants, Kingsway Youth Field Hockey, 190 participants, Kingsway Youth Football, approximately 150 participants, and Logan Township Adult Softball, 110 participants.

Six of these organizations have indicated that participation is expected to increase in the upcoming years with soccer predicting the greatest increase of approximately 1,000 participants. The chart also displays specific facility needs as indicated by each organization.

Community Benchmarking

Community benchmarking was completed as a means of determining how Woolwich and Swedesboro's recreational facilities compare to what will be needed in 2040. 6 municipalities with populations similar to that of Woolwich and Swedesboro's anticipated 2040 population (26,069) were analyzed. Existing recreational facilities in these six municipalities were inventoried and compared to the existing facilities in Woolwich and Swedesboro to determine the extent of deficit or surplus for each type of facility.

The chart on the previous page identifies all facilities inventoried. The chart does not include any school facilities in Woolwich and Swedesboro. Compared to the average of the six comparable municipalities, Woolwich and Swedesboro are deficient in all facility types except football (+1), field hockey (even), lacrosse (even), and skate parks (even)(none). The largest deficiencies compared to the average are tennis (-9), playgrounds (-7), and basketball courts (-7). Soccer is 4 fields deficient, baseball, 3 deficient, and softball, 4 fields deficient.

Level of Service Calculations

In the past, the National Recreation and Park Association (NRPA) advocated a uniform national standard for park

land within a community, for example 10 acres per 1,000 residents. This approach has since been discarded by the NRPA for a less arbitrary standard called “Level of Service” (LOS). The NRPA indicates that the Level of Service is needs driven and facility based focused around supply and demand of particular recreational facilities.

The statistically valid telephone survey described earlier in this chapter was used to determine current demand for park facilities. The results of this survey were utilized in the LOS formula and compared to the current facility supply to produce a standard that responds to the specific recreational needs of Woolwich Township and the Borough of Swedesboro.

The level of service calculation was used for existing baseball, softball, and soccer facilities in Woolwich Township. It was determined that soccer facilities currently serve an approximate population of 5,481 which is about 6 fields deficient. Existing baseball and softball facilities currently serve a population of 5,640 which is about 5 fields deficient.

The level of service should not be used as a sole indicator for future facilities. The LOS should be used in conjunction with the other tools mentioned above as well as the input from the project committee and Woolwich Township parks director to help the Township and borough adequately plan their future recreational facilities.

Recommended Active Recreation Facilities

After analysis of the telephone survey results, online survey results, community benchmarking and LOS calculations, determinations were made as to needed facilities within the Township and borough. Current needs were determined as well as anticipated needs 25 years in the future when the population is expected to roughly double in size. Recommended active recreation facilities

are summarized in the boxes below.

RECOMMENDED FACILITIES - NOW	
Baseball	1 60/90 Field & 2 Smaller Fields
Field Hockey	2 Fields
Football	2 Fields
Soccer	6 Fields
Softball	2 Fields
Multi-use	3 Fields

RECOMMENDED FACILITIES - BY 2040	
Baseball	1-5 Fields
Field Hockey	1-2 Fields
Football	1-2 Fields
Soccer	2-8 Fields
Softball	2-5 Fields
Multi-use	4 or More Fields
Note: Recommendations are in addition to recommended facilities needed now.	

These needs will be dependent on actual population growth, future sports group demand, and future sports group participation. Additionally, use of school facilities by sports organizations and the community may reduce the need for Township fields. Existing use of school facilities is shown in the School Facility Use Chart at the end of this chapter.

In addition to the above facilities, the community surveys showed a strong demand for tennis. Tennis is not listed in the chart above because there are currently no Township owned courts to study actual use and demand. In the next chapter, tennis courts are proposed at both Locke Ave/High Hill Park as well as Beckett Golf Club. A future determination will have to be made as to the appropriate number of courts to serve the community.

SPORTS ORGANIZATION PARTICIPATION, FIELD USE, & NEEDS

Name	Sport	Current Participation / year	Anticipated Participation / year	Time of year	Facilities used	Future needs
Swedesboro/Woolwich Soccer Assoc	Soccer	3000	4000	Year round (all 4 seasons)	Locke Ave Fields C, D, F, and G full time/A & E 2 days ea	4 soccer only fields & 1 hard court
SJ Warriors	Baseball	300	300+	Spring & Fall (7 days)	Locke Ave - Fields A, B, I, H, Q, P, N, O	1 60/90 field & 1 50/70 field
SJ Blue Jays	Baseball	60	96	Spring / Fall	Locke Ave Park	More field space
SJ Bulls	Baseball/Softball	1000	1000	Spring/Summer/Fall	Locke Ave Park - Fields A,H,B,& I (Mon, Sat, Sun)	1 60/90 field & 1 softball field
Kingsway Knights	Baseball/Softball	75	100	Spring/Summer/Fall	Locke Ave Park - Fields A, B, E, H, I, O	1 60/90 field with lights
Swedesboro/Woolwich Little league	Baseball/Softball	750	750	Spring /Fall	Locke Ave Park - Fields A,B,E,H,I,N,O,P, and Q	1 60/90 field & 1-2 smaller fields
Logan Township Adult Softball	Softball (adult coed)	110	190	Spring/Summer (April - Aug)	Locke Ave Park - Field E (Sunday & Wednesday)	Add 2 more days to schedule
Swedesboro Woolwich Basketball	Basketball	450	450+	fall/winter	School gyms	Not answered
Kingsway Youth Football Association	Football	150	150	Fall (Aug - Nov)	Locke Ave - Football practice field	More field space
Kingsway Youth Field Hockey	Field hockey	165	330	7 days/week	Kingsway High School / High Hill Park on Tuesdays	2 additional fields
Kingsway Youth Lacrosse*	Lacrosse					

Locke Ave/High Hill Park closed Dec to mid March (approx 105 days)

*No response

SCHOOL NAME	SEASON	DAY OF THE WEEK										
		MONDAY	TUESDAY	WEDNESDAY	THURSDAY	FRIDAY	SATURDAY	SUNDAY				
KINGSWAY REGIONAL												
Baseball fields (2)	Spring/Fall	School use, 8am-6pm	School use, 8am-6pm	School use, 8am-6pm	School use, 8am-6pm	School use, 8am-6pm	School use, 8am-6pm	School use, 8am-6pm	School use, 8am-6pm	SJ Warriors, 6pm-dusk	SJ Warriors, 8am-dusk	SW Little league, SJ Warriors, 8am-12pm
Basketball (indoor)	Fall/Winter	SJ Warriors, 6pm-dusk	SJ Warriors, 6pm-dusk	SJ Warriors, 6pm-dusk	SJ Warriors, 6pm-dusk	SJ Warriors, 6pm-dusk	SJ Warriors, 6pm-dusk	SJ Warriors, 6pm-dusk	SJ Warriors, 6pm-dusk	SJ Warriors, 6pm-dusk	SJ Warriors, 6pm-dusk	SJ Warriors, 6pm-dusk
Soccer (4)	Fall/Spring/Summer	School use, 8am-6pm	School use, 8am-6pm	School use, 8am-6pm	School use, 8am-6pm	School use, 8am-6pm	School use, 8am-6pm	School use, 8am-6pm	School use, 8am-6pm	School use, 8am-6pm	School use, 8am-6pm	School use, 8am-6pm
Field Hockey (2)	Spring/Fall	SJ Soccer, 6pm-dusk	SJ Soccer, 6pm-dusk	SJ Soccer, 6pm-dusk	SJ Soccer, 6pm-dusk	SJ Soccer, 6pm-dusk	SJ Soccer, 6pm-dusk	SJ Soccer, 6pm-dusk	SJ Soccer, 6pm-dusk	SJ Soccer, 6pm-dusk	SJ Soccer, 6pm-dusk	SW Soccer, 8am-12pm
Football (1)	Fall	School use, 8am-6pm	School use, 8am-6pm	School use, 8am-6pm	School use, 8am-6pm	School use, 8am-6pm	School use, 8am-6pm	School use, 8am-6pm	School use, 8am-6pm	School use, 8am-6pm	School use, 8am-6pm	Kingsway Youth Field Hockey, 6pm-dusk
Tennis (6)	Year round	School use, 8am-6pm	School use, 8am-6pm	School use, 8am-6pm	School use, 8am-6pm	School use, 8am-6pm	School use, 8am-6pm	School use, 8am-6pm	School use, 8am-6pm	School use, 8am-6pm	School use, 8am-6pm	Community, 8am-10pm
STRATTON SCHOOL												
Small baseball/softball fields (2)	Spring/Fall	School use, 8am-6pm	School use, 8am-6pm	School use, 8am-6pm	School use, 8am-6pm	School use, 8am-6pm	School use, 8am-6pm	School use, 8am-6pm	School use, 8am-6pm	School use, 8am-6pm	School use, 8am-6pm	SW Little League, 8am-12pm
Basketball (indoor)	Fall/Winter	SW Little League, 6pm-dusk	SW Little League, 6pm-dusk	SW Little League, 6pm-dusk	SW Little League, 6pm-dusk	SW Little League, 6pm-dusk	SW Little League, 6pm-dusk	SW Little League, 6pm-dusk	SW Little League, 6pm-dusk	SW Little League, 6pm-dusk	SW Little League, 6pm-dusk	SW Little League, 8am-12pm
HARKER SCHOOL												
Baseball field (2)	Spring/Fall	School use, 8am-6pm	School use, 8am-6pm	School use, 8am-6pm	School use, 8am-6pm	School use, 8am-6pm	School use, 8am-6pm	School use, 8am-6pm	School use, 8am-6pm	School use, 8am-6pm	School use, 8am-6pm	SW Basketball, 8am-12pm
Youth soccer field (4)	Spring/Fall	SW Little League, 6pm-dusk	SW Little League, 6pm-dusk	SW Little League, 6pm-dusk	SW Little League, 6pm-dusk	SW Little League, 6pm-dusk	SW Little League, 6pm-dusk	SW Little League, 6pm-dusk	SW Little League, 6pm-dusk	SW Little League, 6pm-dusk	SW Little League, 6pm-dusk	SW Little League, 8am-12pm
Basketball (indoor)	Fall/Winter	School use, 8am-6pm	School use, 8am-6pm	School use, 8am-6pm	School use, 8am-6pm	School use, 8am-6pm	School use, 8am-6pm	School use, 8am-6pm	School use, 8am-6pm	School use, 8am-6pm	School use, 8am-6pm	SW Soccer, 8am-12pm
HILL SCHOOL												
Soccer Field (1)	Spring/Fall	School use, 8am-6pm	School use, 8am-6pm	School use, 8am-6pm	School use, 8am-6pm	School use, 8am-6pm	School use, 8am-6pm	School use, 8am-6pm	School use, 8am-6pm	School use, 8am-6pm	School use, 8am-6pm	SW Soccer, 8am-12pm
Basketball (indoor)	Fall/Winter	SW Soccer, 6pm-dusk	SW Soccer, 6pm-dusk	SW Soccer, 6pm-dusk	SW Soccer, 6pm-dusk	SW Soccer, 6pm-dusk	SW Soccer, 6pm-dusk	SW Soccer, 6pm-dusk	SW Soccer, 6pm-dusk	SW Soccer, 6pm-dusk	SW Soccer, 6pm-dusk	SW Soccer, 8am-12pm
CLIFFORD SCHOOL												
Basketball (indoor)	Fall/Winter	School use, 8am-6pm	School use, 8am-6pm	School use, 8am-6pm	School use, 8am-6pm	School use, 8am-6pm	School use, 8am-6pm	School use, 8am-6pm	School use, 8am-6pm	School use, 8am-6pm	School use, 8am-6pm	SW Basketball, 8am-12pm
		SW Basketball, 6pm-dusk	SW Basketball, 6pm-dusk	SW Basketball, 6pm-dusk	SW Basketball, 6pm-dusk	SW Basketball, 6pm-dusk	SW Basketball, 6pm-dusk	SW Basketball, 6pm-dusk	SW Basketball, 6pm-dusk	SW Basketball, 6pm-dusk	SW Basketball, 6pm-dusk	SW Basketball, 8am-12pm



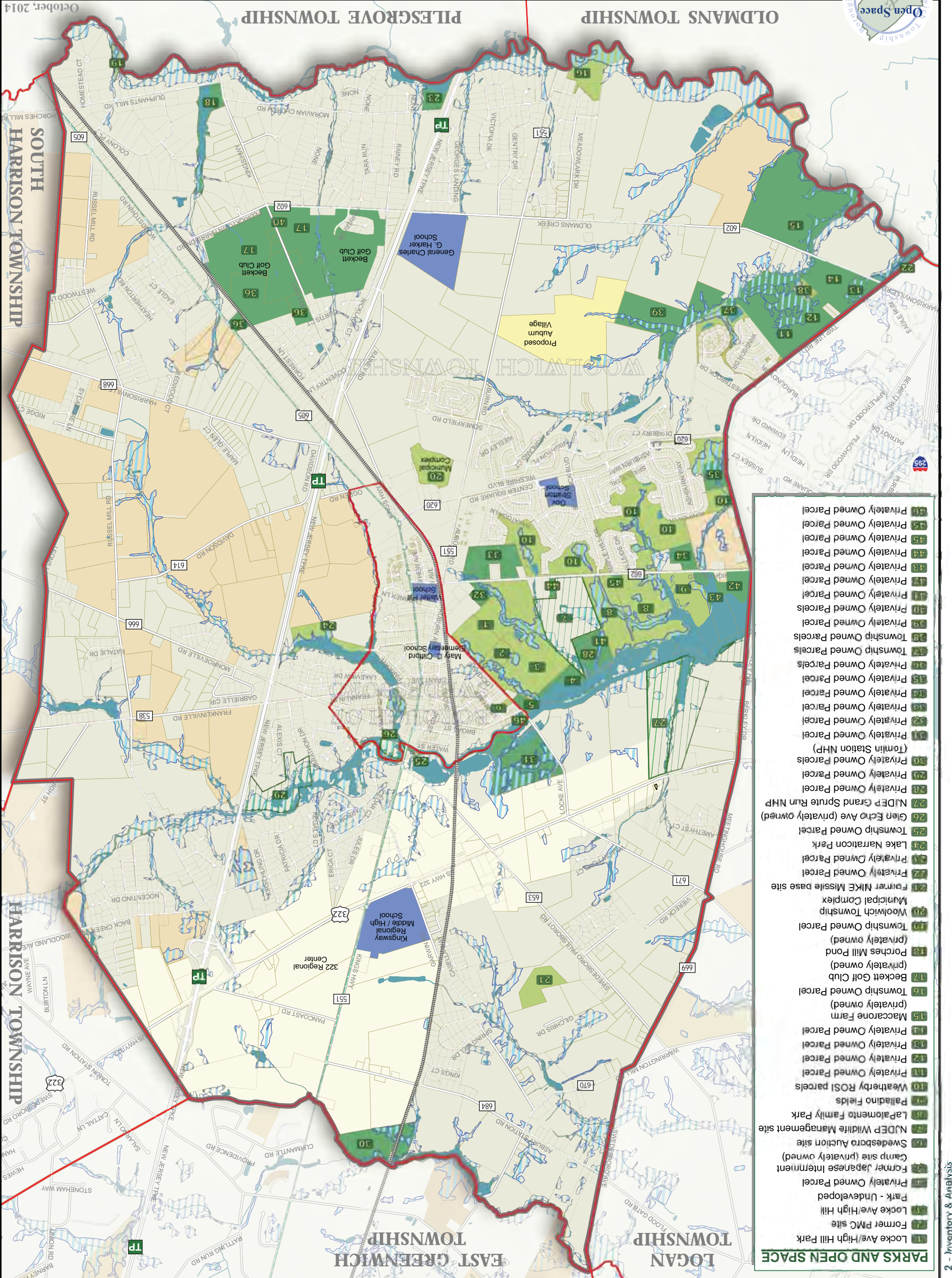
DRAFT



PARK & OPEN SPACE INVENTORY



- 322 TDR Receiving Area
- 322 TDR State Property
- Wetland
- Railroad
- Water
- Mass Transit / Stop
- Project Area
- Municipal Boundary
- Stream
- Parcel
- Proposed Road
- Road
- Permanently Preserved Farm
- Municipal Park & Open Space
- Receiving Area TDR
- Other Parcels of Interest
- School



- PARKS AND OPEN SPACE**
- 1 Locke Ave/High Hill Park
 - 2 Former PMC site
 - 3 Locke Ave/High Hill
 - 4 Park - Undeveloped
 - 5 Privately Owned Parcel
 - 6 Former Japanese Internment Camp site (privately owned)
 - 7 Svedesboro Auction site
 - 8 NJDEP Wildlife Management site
 - 9 LaPalomato Family Park
 - 10 Palladino Fields
 - 11 Weatherby ROSI parcels
 - 12 Privately Owned Parcel
 - 13 Privately Owned Parcel
 - 14 Privately Owned Parcel
 - 15 Maccatore Farm (privately owned)
 - 16 Township Owned Parcel
 - 17 Beckett Golf Club (privately owned)
 - 18 Porches Mill Pond (privately owned)
 - 19 Township Owned Parcel
 - 20 Woodwich Township Municipal Complex
 - 21 Former Nike Missile base site
 - 22 Former Nike Missile base site
 - 23 Privately Owned Parcel
 - 24 Privately Owned Parcel
 - 25 Lake Narratcon Park
 - 26 Township Owned Parcel
 - 27 Glen Echo Ave (privately owned)
 - 28 NJDEP Grand Spire Run NHP
 - 29 Privately Owned Parcel
 - 30 Privately Owned Parcel (Tomlin Station NHP)
 - 31 Privately Owned Parcel
 - 32 Privately Owned Parcel
 - 33 Privately Owned Parcel
 - 34 Privately Owned Parcel
 - 35 Privately Owned Parcel
 - 36 Privately Owned Parcel
 - 37 Privately Owned Parcel
 - 38 Township Owned Parcels
 - 39 Privately Owned Parcel
 - 40 Privately Owned Parcel
 - 41 Privately Owned Parcel
 - 42 Privately Owned Parcel
 - 43 Privately Owned Parcel
 - 44 Privately Owned Parcel
 - 45 Privately Owned Parcel
 - 46 Privately Owned Parcel

PARK FACILITIES MATRIX							
Site #	Facility Name	Size (acres)	Ownership Status	Existing/Anticipated Facility Type	Existing/Potential Primary Use	Priority (High, Medium, Low)	Acquisition Cost (Y/N)
							Development Cost Low < \$500K Med < \$1M High > \$1M
1	Locke Avenue / High Hill Park	78.88	Township	Active	Sports	High	N
2	Former PNC Site	9.54	Township	Active	Sports	High	N
3	Lock Avenue / High Hill Park (undeveloped)	61.98	Township	Active	Sports	High	N
4	Privately Owned Parcel	32.33	Private	Passive	Water access, Env. Protection	High	Y
5	Former Japanese Internment Camp	5.79	Private	Passive	Historic, Water access	Med	Y
6	Swedesboro Auction Site	2.33	Borough	Mixed	Community use, skating, events	High	N
7	NJDEP Wildlife Management Site	64.03	NJ DEP	Passive	Env. Protection	High	Y (may trade for other twp owned site)
8	Lapalomiento Family Site	144.15	Township	Mixed	Sports, water access, trails, Env. Protection	High	N
9	Palladino Fields	40.5	Township	Passive	Env. Protection	High	N
10	Weatherby ROST parcels	141.21	Township	Passive	Connector Trails, Env. Protection	Med	N
11	Privately Owned Parcel	56.38	Private	Mixed	Sports, Env. Protection	High	Y
12	Privately Owned Parcel	44.22	Private	Mixed	Sports, Env. Protection	High	Y
13	Privately Owned Parcel	16.5	Private	Passive	Env. Protection	Low	Y
14	Privately Owned Parcel	29.7	Private	Passive	Env. Protection	Low	Y
15	Maccarone Farm	124	Private	Passive	Water access, Env. Protection	High	Y
16	Township Owned Parcel	31.56	Township	Passive	Water access, Env. Protection	Low	N
17A	Beckett Golf Club (western side)	131.4	Private	Mixed	Recreation, Community use, Golf	High	Y
17B	Beckett Golf Club (eastern side)	91.37	Private	Mixed	Recreation, Community use, Golf	Med	Y
18	Olliphant's Mill Pond	31.6	Private	Passive	Swimming, Env. Protection	High	Y
19	Township Owned Parcel	6	Township	Passive	Env. Protection	Low	N
20	Woolwich Township Municipal Complex	23.99	Township	Passive	Community use	Med	N
21	Former NIKE Missile Base Site	33.82	Township	Passive	Historical Interpretation	Low	N
22	Privately Owned Parcel	10	Private	Passive	Water access, Env. Protection	Low	Y
23	Privately Owned Parcel	9.65	Private	Passive	Water access, Env. Protection	High	Y
24	Lake Narraticon Park	36.29	Borough	Passive	Water recreation, trails, community use	High	N
25	Township Owned Parcel	1	Township	Passive	Water access	Med	N
26	Glen Echo Ave.	0.72	Private	Passive	Water access	High	Y
27	NJDEP Grand Spruce Run NHP	97.02	State	Passive	Env. Protection	Low	State Owned
28	Privately Owned Parcel	11.79	Private	Passive	Water access, community use	High	Y
29	State Owned Parcel	30.2	State	Passive	Env. Protection	Low	State Owned
30	Tomlin Station NHP	45	Private	Passive	Pond access, Env. Protection	Low	Y
31	Privately Owned Parcel	58.65	Private	Passive	Water Access, Env. Protection	High	Y
32	Privately Owned Parcel	7.38	Private	Active	Sports	Low	Y
33	Privately Owned Parcel	33.39	Private	Passive	Connector trails	Med	Y
34	Privately Owned Parcel	10.81	Private	Passive	Connector trails	High	Y
35	Privately Owned Parcel	13.21	Private	Passive	Connector trails	Low	Y
36	Privately Owned Parcel	51.83	Private	Mixed	Golf, Env. Protection	Med	Y
37	Township Owned Parcel	22.28	Township	Passive	Trails, Env. Protection	Med	N
38	Township Owned Parcels	6.14	Township	Passive	Env. Protection	Med	N
39	Privately Owned Parcel	64.22	Private	Passive	Trails, Env. Protection	Low	Y
40	Privately Owned Parcels	2.95	Private	Mixed	Recreation, Community use, Golf	High	Y
41	Privately Owned Parcel	11.05	Private	Passive	Water Access, Trails, Community use	Med	Y
42	Privately Owned Parcel	27.76	Private	Passive	Trails, Env. Protection	High	Y
43	Privately Owned Parcel	24.46	Private	Passive	Trails, Env. Protection	Low	Y
44	Privately Owned Parcel	2.51	Private	Passive	Township use, Community use	Med	Y
45	Privately Owned Parcel	1.13	Private	Passive	Trails, Township use, Community use	Med	Y
46	Privately Owned Parcel	0.91	Private	Passive	Gateway park, Community use	Med	Y
TOTAL		1,781.63					



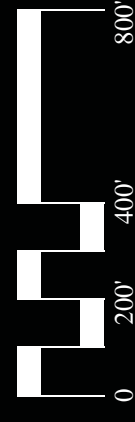
LEGEND

- Parcels
- Contour Lines-2' Intervals state open space
- Municipal Boundaries
- Water Bodies
- Existing Bridge
- Existing Farm Roads
- Potential Future Trailhead
- Existing Vehicular Access
- Preliminary Wetlands Line
- 150' Wetland Setback
- Developable Area

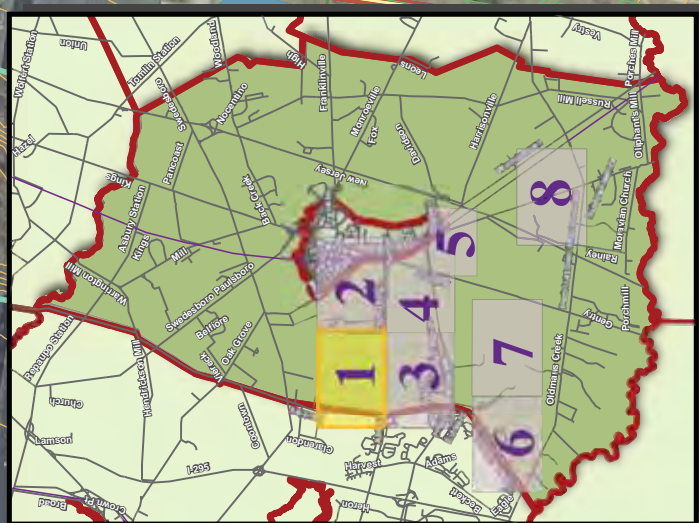
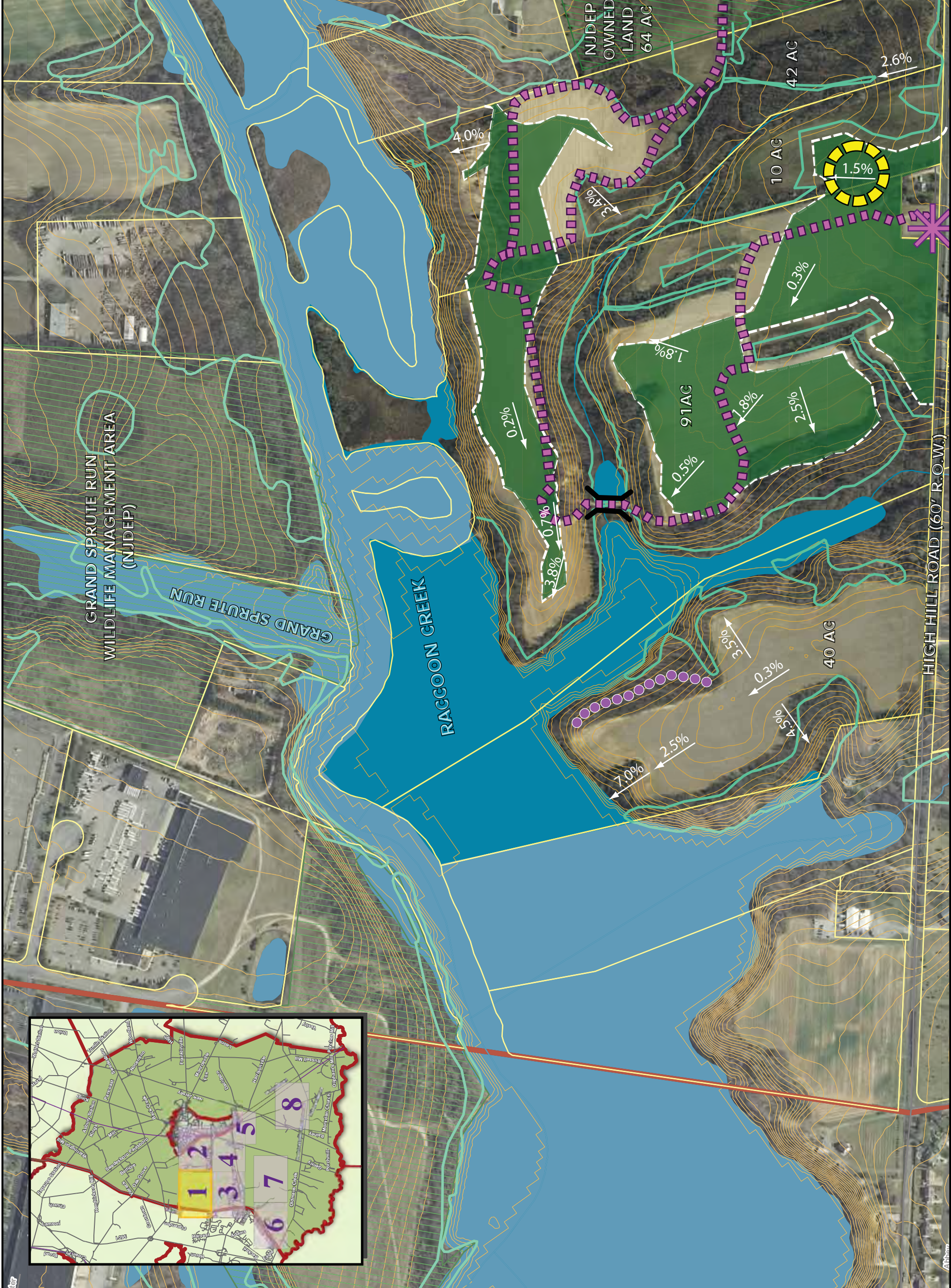
EXISTING CONDITIONS

MAP 1

December, 2014



SIMONE LANDSCAPE ARCHITECTURE
COLLINS
the Reed Group



HIGH HILL ROAD (60' R.O.W.)

GRAND SPRUTE RUN
WILDLIFE MANAGEMENT AREA
(NJDEP)

RACCOON CREEK

NJDEP OWNED LAND 64 AC

42 AC

10 AC

91 AC

40 AC



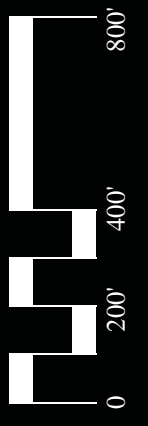
LEGEND

- Railroad
- Parcels
- Contour Lines-2' Intervals
- Municipal Boundaries
- Water Bodies
- Bridge
- Vehicular paths
- Pedestrian paths
- Vehicular Access Point
- Pedestrian Access Point
- Playgrounds
- Basketball Courts
- Preliminary Wetlands Line
- 150' Wetland Setback
- Railroad
- Potential Woolwich/Swedesboro Gateway Area
- Developable Area

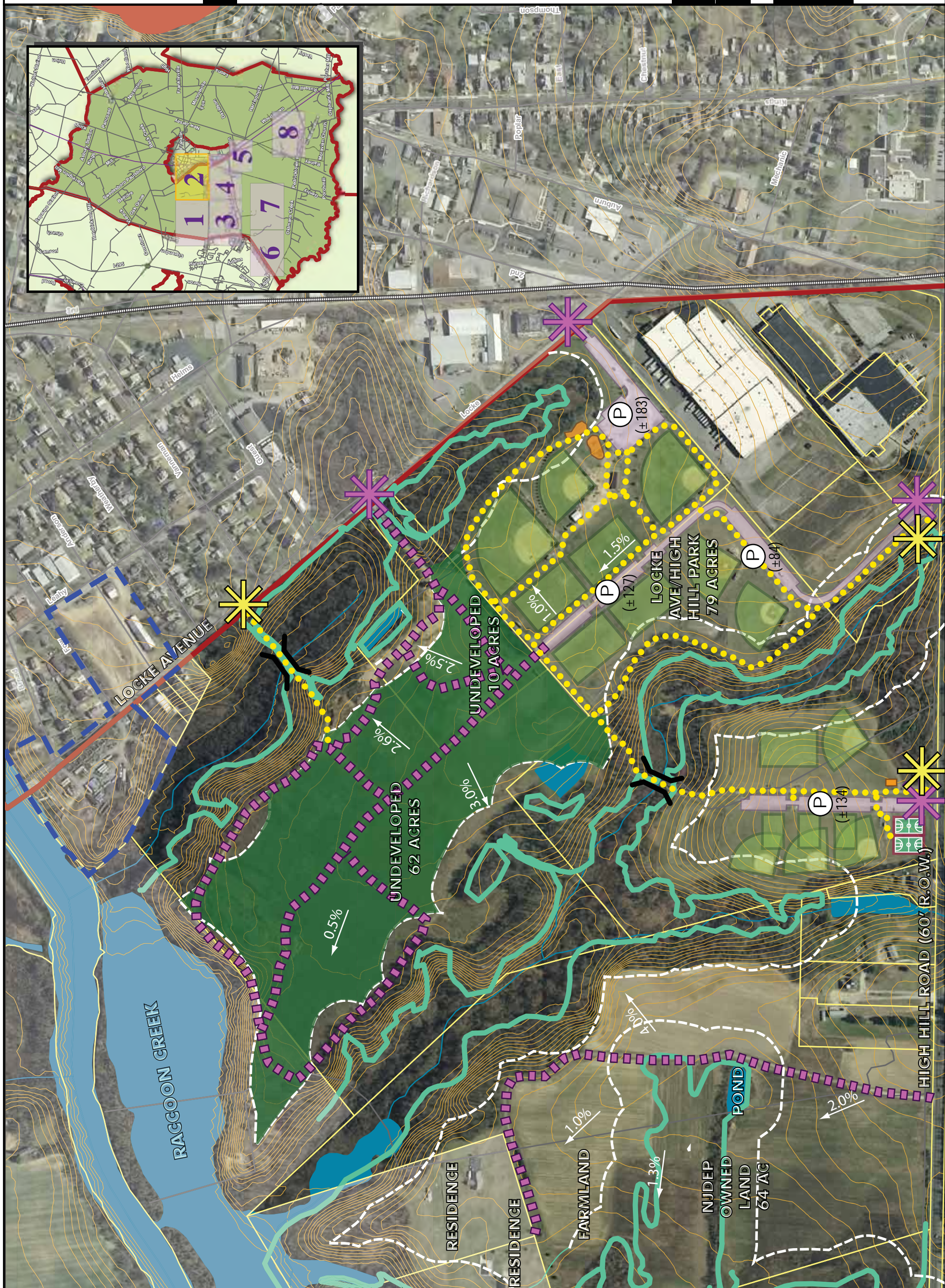
EXISTING CONDITIONS

MAP 2

December, 2014



North
 SIMONE LANDSCAPE ARCHITECTURE COLLINS
 the Reed Group





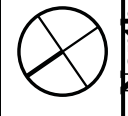
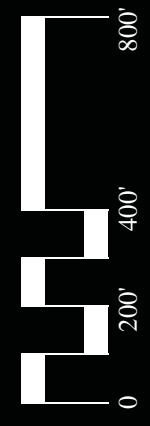
LEGEND

- Parcels
- Contour Lines-2' Intervals
- Township Open Space
- Municipal Boundaries
- Water Bodies
- Pedestrian/Maintenance Access Points
- Vehicular Access Point
- Vehicular path
- SWM Basin
- Wetlands Line (GIS)
- 150' Wetland Setback
- Existing Trail (Asphalt)
- Overhead Utility
- Bridge
- Developable land (open space)

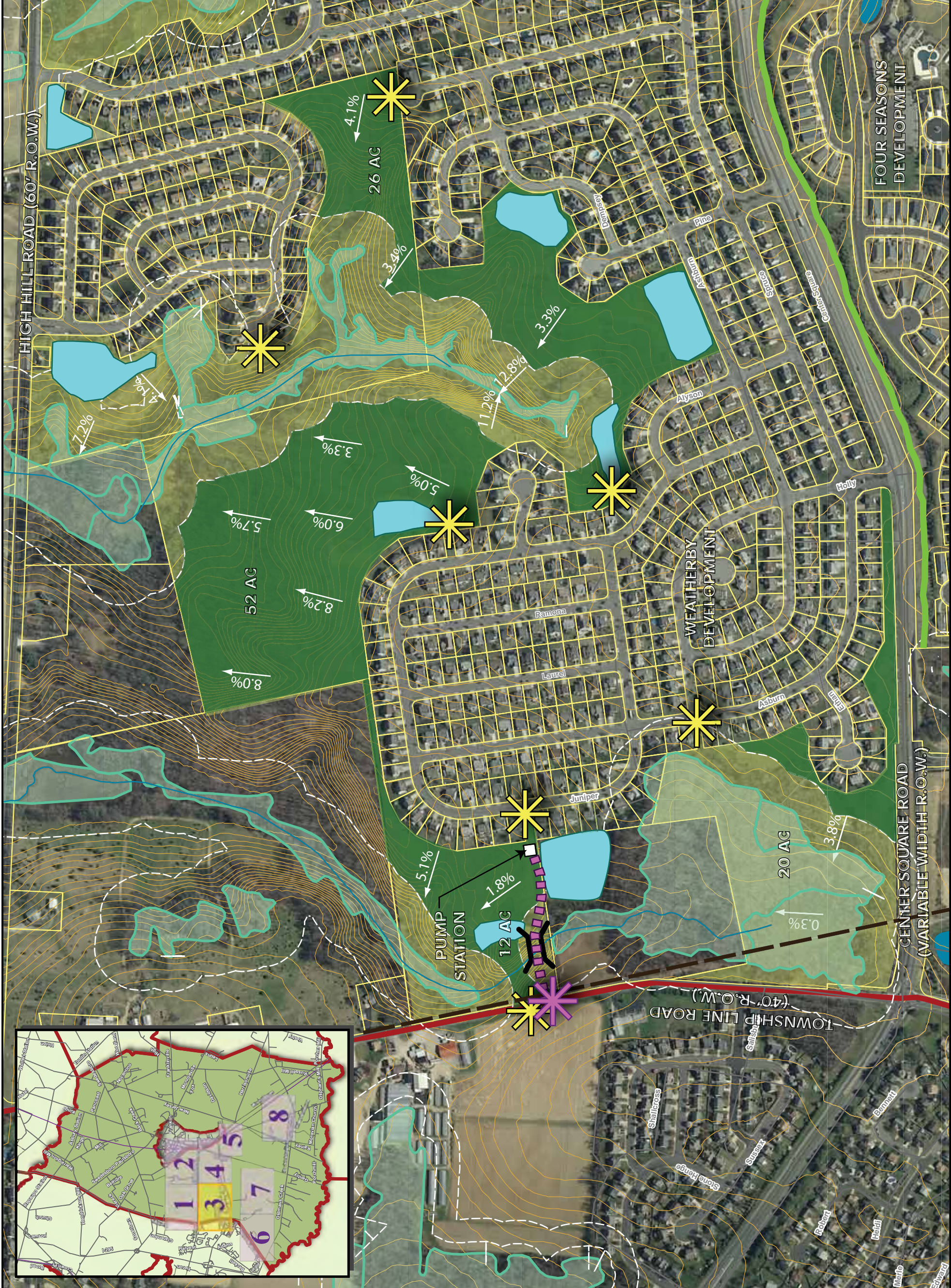
EXISTING CONDITIONS

MAP 3

December, 2014



SIMONE LANDSCAPE ARCHITECTURE
COLLINS
the Reed Group





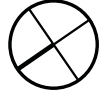
LEGEND

- Parcels
- Contour Lines-2 Intervals
- Township Open Space
- Municipal Boundaries
- Water Bodies
- Existing Trail (Asphalt)
- SWM Basin
- Wetland Line (GIS)
- 150' Wetland Setback
- Railroad
- Pedestrian path

EXISTING CONDITIONS

MAP 4

December, 2014



North





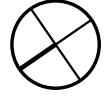
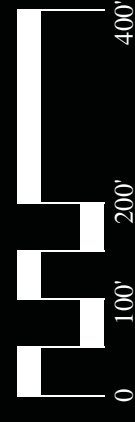
LEGEND

- Legend**
- Parcels
 - Municipal Boundaries
 - SWM Basin
 - Solar Farm
 - Parking Areas
 - Community Gardens
 - Existing Trail (Asphalt)

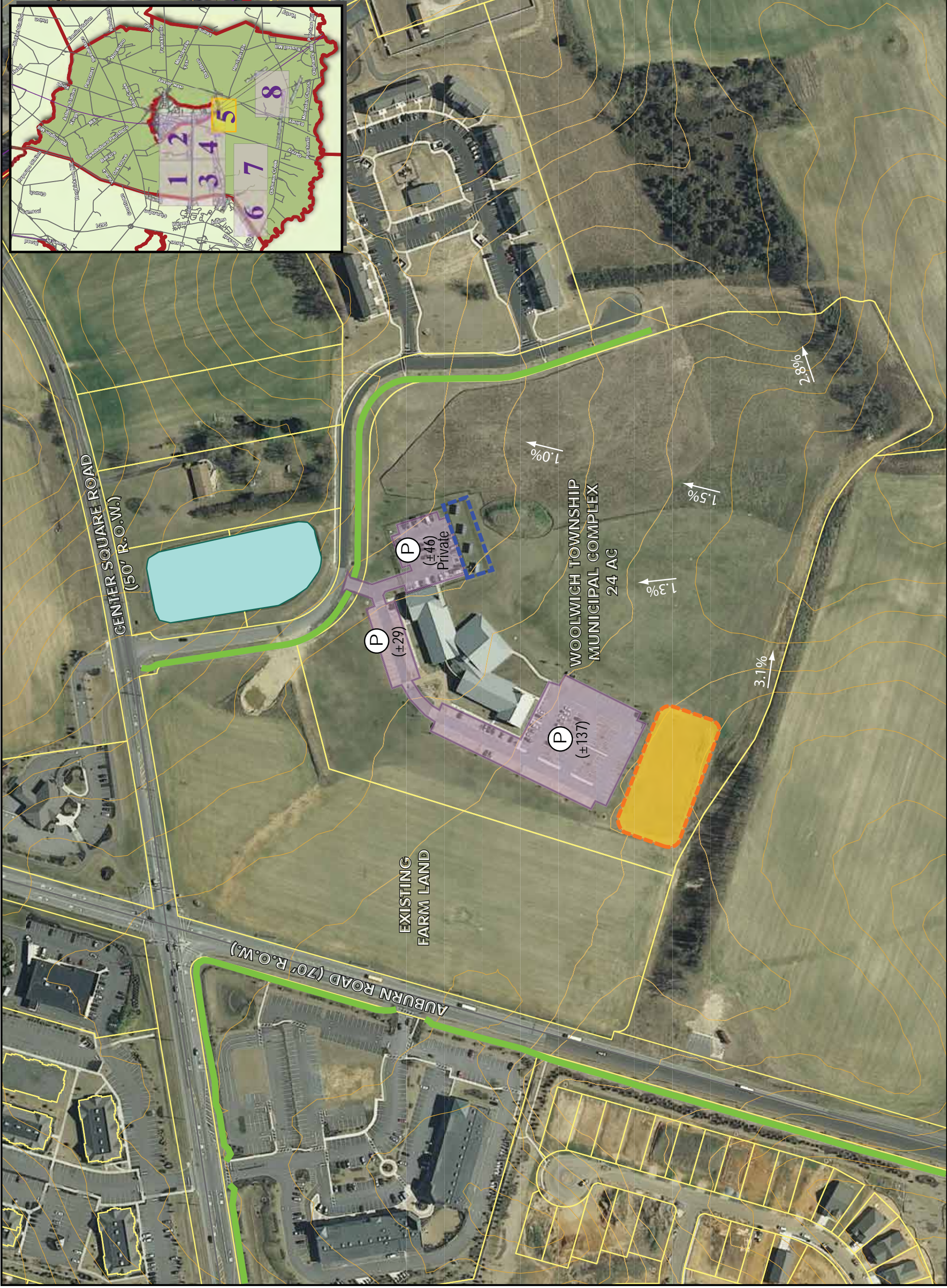
**EXISTING
CONDITIONS**

MAP 5

December, 2014



North



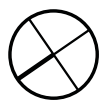
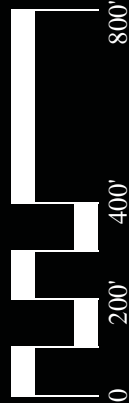
LEGEND

- Legend**
- Parcels
 - Contour Lines-2' Intervals
 - Municipal Boundaries
 - Water Bodies
 - Wetlands
 - Wetland setback

EXISTING CONDITIONS

MAP 6

December, 2014



North





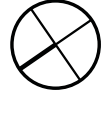
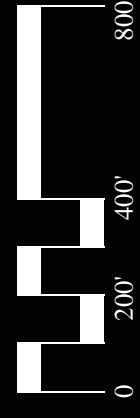
LEGEND

- Legend**
- Parcels
 - Contour Lines-2' Intervals
 - Municipal Boundaries
 - Water Bodies
 - Wetlands
 - Wetland setback
 - Proposed Auburn Village

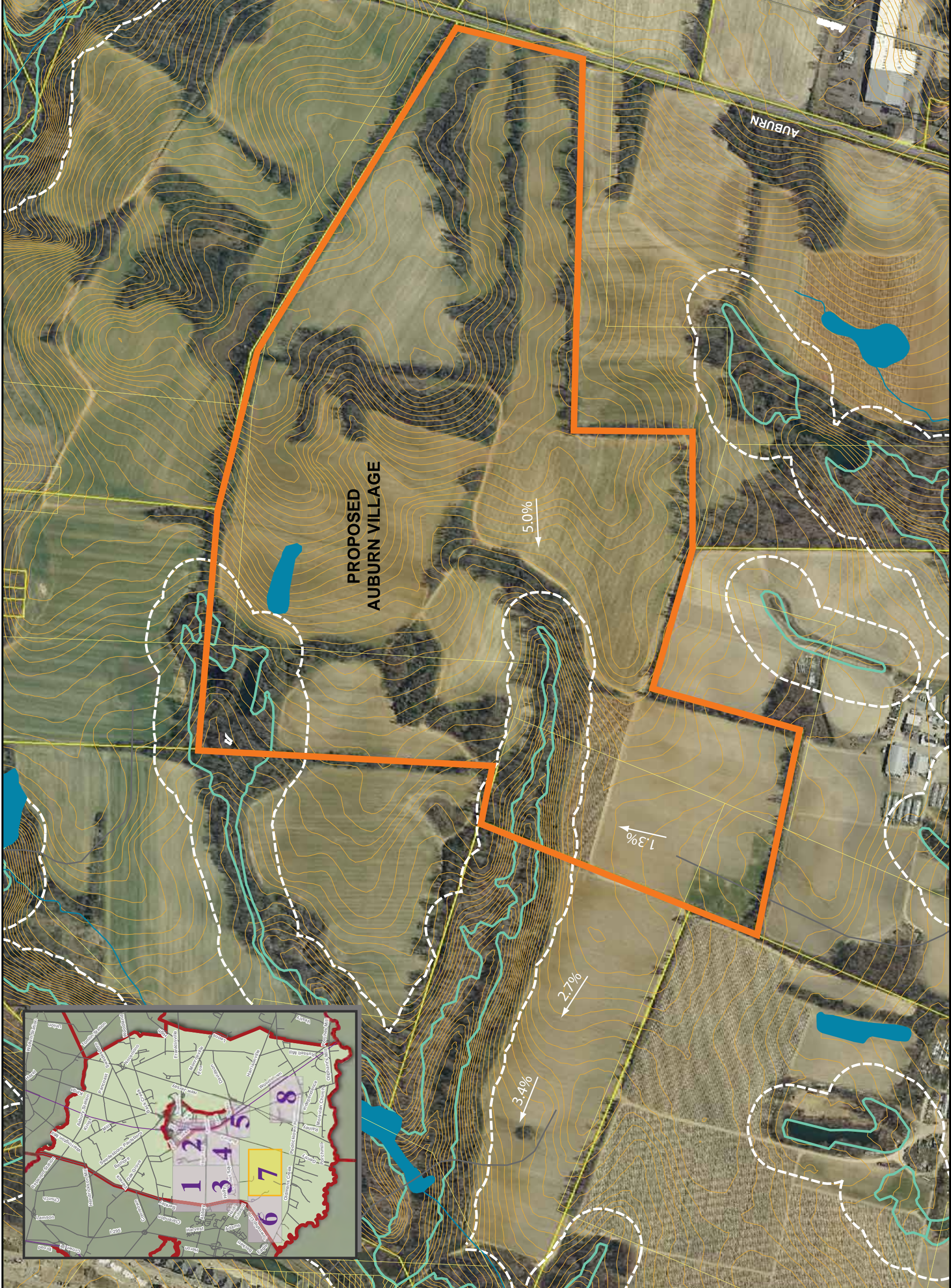
EXISTING CONDITIONS

MAP 7

December, 2014



North





LEGEND

- Parcels
- Contour Lines-2' Intervals
- Municipal Boundaries
- Water Bodies
- Wetlands
- Wetland setback
- Existing Golf Area
- Existing Parking Area

EXISTING CONDITIONS

MAP 8

December, 2014

